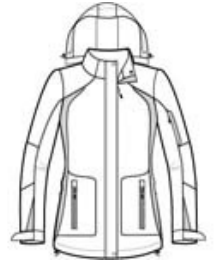




Our All-Season II Jacket has colorblock panels at the sides and sleeves to give it year-round appeal.

- 100% Taslan nylon shell
- 100% microfleece body lining
- 100% polyester sleeve lining for easy on/off
- 3000MM fabric waterproof rating
- Critically seam-sealed for added waterproof protection
- 3000G/M² fabric breathability rating
- Gently contoured silhouette
- Zip-off hood with drawcord and toggles
- Storm flap with hook and loop closure
- Two-way zipper with zipper garage
- Interior cell phone pocket
- Interior zippered pocket
- Articulated elbows for greater mobility
- Left sleeve zippered pocket
- Port Pocket™ for easy embroidery access
- Adjustable self-fabric tab cuffs with hook and loop closures
- Front zippered pockets
- Drop tail hem with drawcord and toggles for adjustability



front

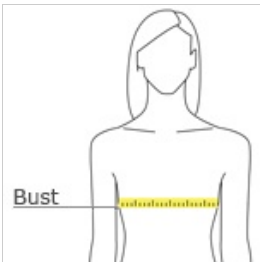


back

CARE INSTRUCTIONS

[Tips For Effectively Screen Printing Polyester Fabrics](#)

HOW TO MEASURE








BUST

With arms down at sides, measure around the upper body, under arms and around the fullest part of the bust.

SIZE CHART

	XS	S	M	L	XL	XXL	3XL	4XL
Size	2	4/6	8/10	12/14	16/18	20/22	24/26	28/30
Bust	32-34	35-36	37-38	39-41	42-44	45-47	48-51	52-55

COLOR INFORMATION

				
Black/Black PMS 426 C	Snorkel Blue/Black PMS 7462 C	True Navy/Iron Grey PMS 276 C	True Red/Black PMS 200 C	White/Black PMS WHITE